

# Anti-CLDN1 hIgG1 Reference Antibody (Lixubio)

## Product Information

**Product Name** Anti-CLDN1 hIgG1 Reference Antibody (Lixubio)  
**Storage temp.** Store at 2-8°C short term (1-2 weeks).Store at  $\leq -20^{\circ}\text{C}$  long term. Avoid repeated freeze-thaw.

**Catalog# / Size** **GM-88096MAB-1mg / 1 mg**  
**GM-88096MAB-5mg / 5 mg**  
**GM-88096MAB-25mg / 5 mg\*5 vials**  
**GM-88096MAB-50mg / 50 mg**  
**GM-88096MAB-100mg / 50 mg\*2 vials**

## Antibody Information

**Expression System** CHO  
**Aggregation** < 5% as determined by SEC-HPLC  
**Purity** > 95% as determined by SDS-PAGE  
**Species Reactivity** Human  
**Clone** Lixudebart  
**Source/Isotype** Monoclonal Human IgG1 REEM,P330S,Delta447K  
**Application** Flow Cytometry  
**Specificity** Detects CLDN1  
**Gene** CLDN1  
**Other Names** CLD1, ILVASC, SEMP  
**Gene ID** 9076 (human)  
**Background** CLDN1(Claudin-1) is an important component of cell-cell junctions. It belongs to the cell adhesion protein family and is mainly expressed in epithelial cells. Claudin-1 is expressed in many types of epithelial cells and plays a key role in regulating cell permeability and establishing biological barriers. It plays a key role in maintaining the barrier function of cells and participating in cell signal transduction. Lixudebart is a humanized IgG1 monoclonal antibody developed by Alentis Therapeutics that targets the Claudin-1 protein and is used to treat diseases such as kidney, liver and lung fibrosis. In the treatment of ANCA-associated vasculitis and other fibrosis-related diseases, it can be used as an emerging targeted therapy in combination with traditional drugs to optimize the treatment effect.  
**Storage** Store at 2-8°C short term (1-2 weeks). Store at  $\leq -20^{\circ}\text{C}$  long term.Avoid repeated freeze-thaw.  
**Formulation** Phosphate-buffered solution, pH 7.2-7.4.  
**Endotoxin** < 1 EU/mg, determined by LAL gel clotting assay

Version:3.1

## Data Examples

Flow cytometry

H\_CLDN1 CHO-K1 Cell Line (Catalog # GM-C33552) was stained with Anti-CLDN1 hIgG1 Reference Antibody (Lixubio) (Catalog # GM-88096MAB) or isotype control antibody, followed by anti-Human IgG APC-conjugated Secondary Antibody.

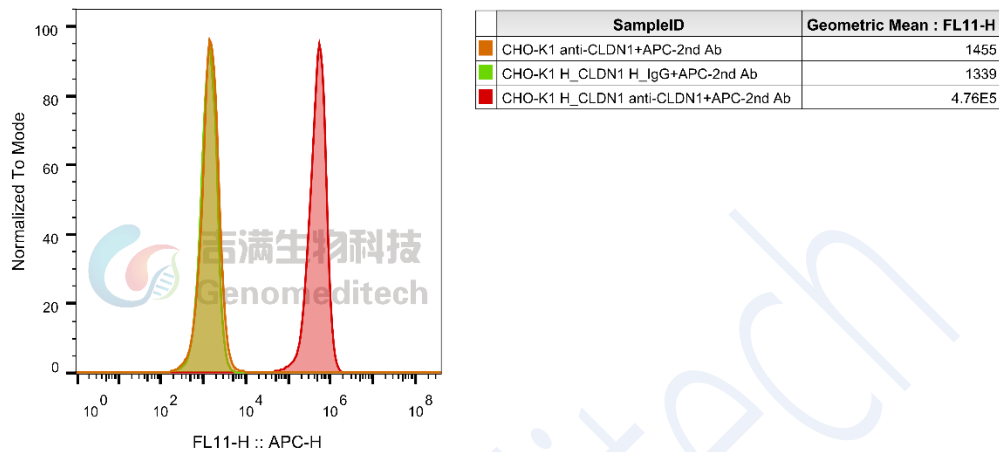


Fig 1. FACS